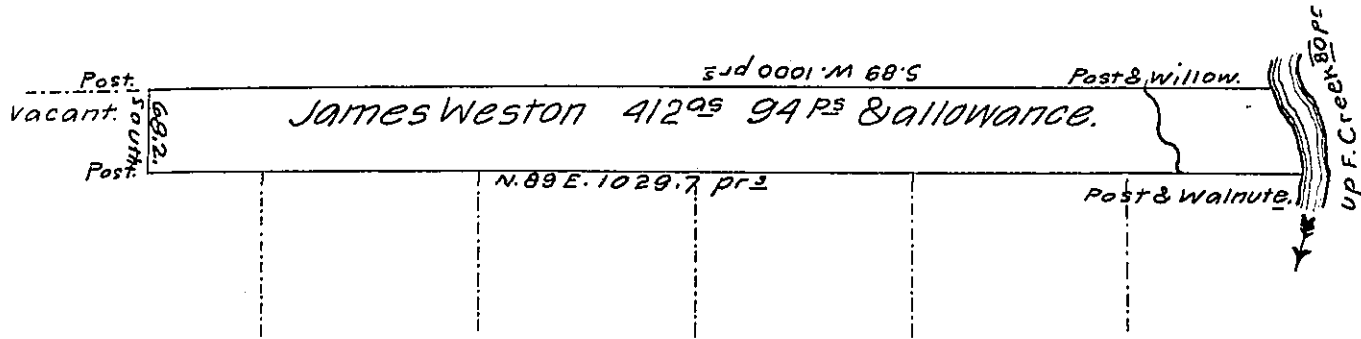


River Courses beg^d-a Post & Walnut.
 N. 9 W 54
 N. 55 W 26
 Perches 80.

Thomas Rees District



Donation Surveys.

Situate on and adjoining the West side of French Creek in Allegheny County containing 412 acres 94 perches & allowance of Six p^r Cent for Roads &^c. Surveyed the 20th day of June 1798 for James Weston In pursuance of his Improvement Bearing date the 20th day of August 1796.

John Power, D^r S^r

To Daniel Brodhead, Esquire,
 Surveyor General.

IN TESTIMONY that the above is a copy of the original remaining on file in the Department of Internal Affairs of Pennsylvania, made conformably to an Act of Assembly approved the 16th day of February, 1833, I have hereunto set my Hand and caused the Seal of said Department to be affixed at Harrisburg, this twenty fifth day of September, 1906.

Leas N Power
 Secretary of Internal Affairs.